



LANDSCAPE STRATEGY

Havenstock Field
Graylingwell, Chichester

Produced by:

Allen Pyke Associates



69A Lensfield Road
Cambridge CB2 1EN
T: 01223 358055
F: 020 8547 1075
www.allenpyke.co.uk

On behalf of: Linden Downland LLP

Ref: 2181-RE-03
Date: May 2011
Revision F



The non sports areas will be maintained with a sympathetic mowing regime that is as minimal an intervention as possible to create tall tussocky grassland which will provide reptiles with a habitat. The wildflower meadows are to be unmown for two years to allow the grassland to become taller and denser. In the third and subsequent years these areas should be cut no lower than 150mm above the ground level in July/August. This will maintain a thatch for reptiles to use whilst preventing coarser species from out competing finer grasses.

Some of the wild flower areas will incorporate shallow infiltration areas to the north for sustainable drainage of excess surface water from phase 1 and these will benefit the nearby mature trees.

The iron age dyke is also to be mown as the wild flower meadow to minimise intervention of this historic feature.



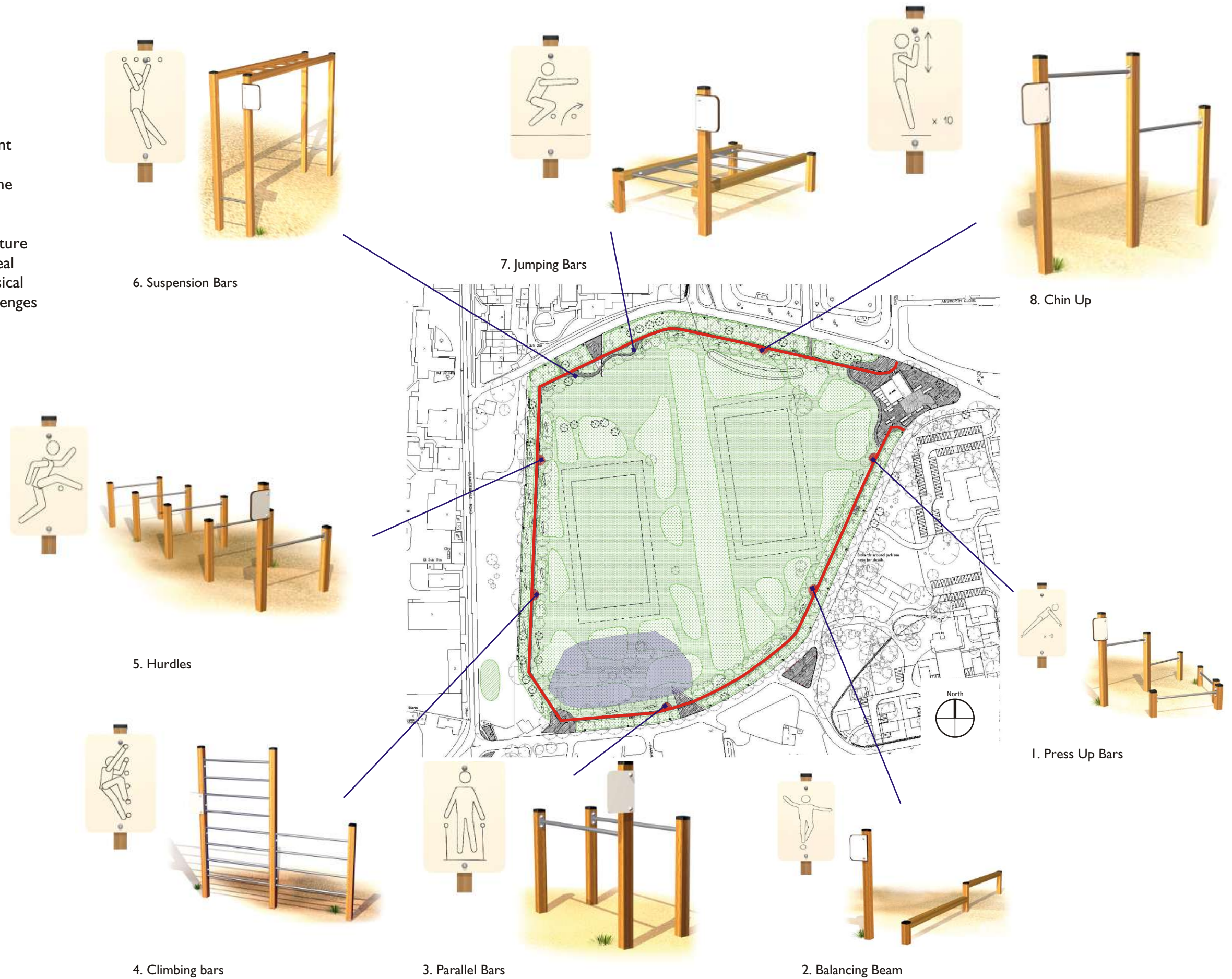


Havenstock Park- Trim Trail

A Trim Trail consisting of a range of equipment will create a loop along the path around Havenstock Field. This will be connected to the adventure play area.

The equipment, selected for their versatile nature and suitability for a wide range of ages, are ideal for exercise and coordination, improving physical strength and balancing skills by providing challenges to adults as well as older children.

FOR DETAILS SEE 2181-LA-05





Havenstock Park - Wellbeing Strategy

A wellbeing trail is proposed around Havenstock Park as part of the “GraylingwellBeing” strategy for the site. (See report prepared by Future City).

This trail is one of five “Experience Trails” set around Graylingwell and will be developed in a number of specially commissioned coloured concrete elements to be set into the existing tar spray and chip perimeter path. It is understood that there may be up to 20 of these robust, permanent and very durable elements around the park.



Indicative image of timber finger posts for Way Finding

Low softwood timber bollards have been placed in a line along the pathway at 1.6m intervals as a vehicle determinant.



Seating bays

Comprising:

- 1500mm long bench such as Buckingham Seat by Broxap or equivalent
- Round iron rubbish bin such as BX 2318 by Broxap or equivalent

